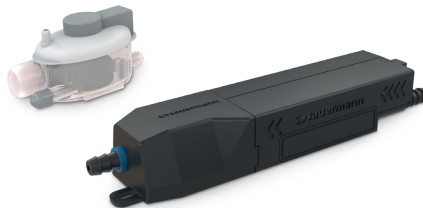
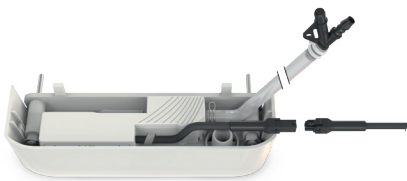


sauermann[®]
a **VERDER** company



CONDENSATE REMOVAL PRODUCTS

Designed with quality in mind





Quiet



Dependable



State of the art

THE POWER OF SAUERMANN PUMPS

In HVAC, not all condensate pumps are the same. With unparalleled quietness, proven reliability, and easy installation, Sauermann pumps, accessories and complete solution kits deliver performance that ensures peace of mind.

Innovative product design and construction combines with numerous patented technologies. The result? Outstanding dependability. Available in a variety of sizes, capacities and mounting configurations, Sauermann pumps reduce vibration to minimize noise, resist common clogging from environmental pollution and maintain optimal flow rates. This means years of trouble-free operation from a condensate pump you can trust.

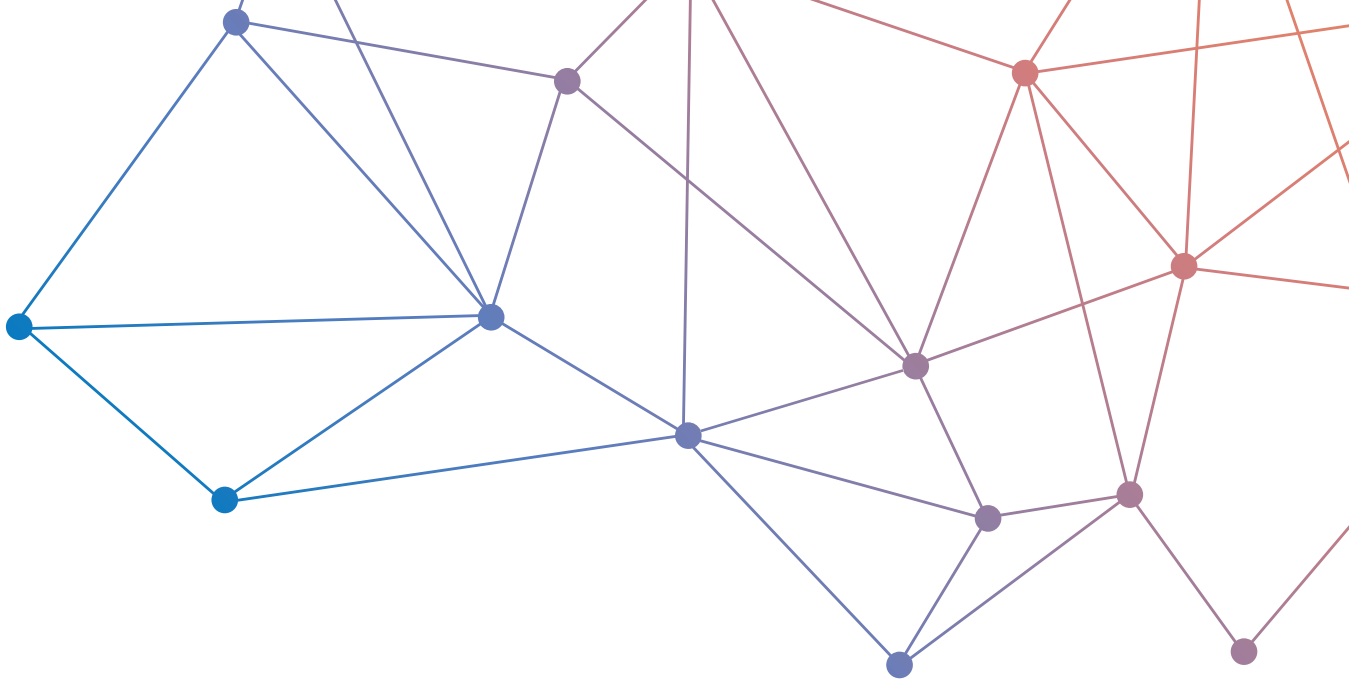


Table of contents

Si-10.....	4
Delta Pack.....	5
Si-20.....	6
Si-21.....	7
Si-30.....	8
Si-33.....	9
Omega Pack.....	10
Si-61.....	11
Si-83.....	12
Si-1801.....	13
Si-1801TNUS.....	14
Pump Accessories.....	15
Brackets.....	16
Easy Lineset Ducts.....	17

Si-10

Mini condensate removal pump

Integrated detection unit for install in tight spaces.



Suitable for

- Up to 5.5 tons
- Wall mounted units
- Ducted units
- Suspended ceiling units
- Floor mounted units
- 5 gph max. flow
- 33' max. discharge

Performance



Mounting bracket



Compact monobloc design



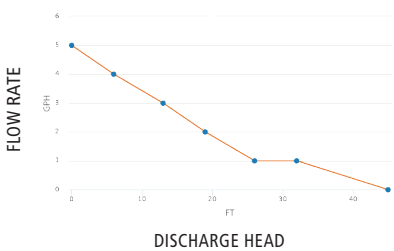
Integrated detection unit

Si-10 tech specs

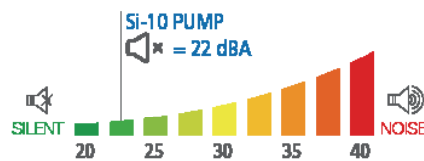
Max. Flow rate	5.0 gph	Safety switch	NC 8A resistive - 250 V
Max. Discharge head	33ft: flow rate = 1 gph	Thermal protection	239°F auto-reset
Max. Pressure	46ft: flow rate = 0 gph	Operating conditions	100%: Continuous duty
Sound level at 3.3ft	22 dBA according to EN ISO 3744 (measured at LNE lab, pump operating with water, out of application)	Pump dimensions	L 2 ⁵ / ₈ " x W 1 ³ / ₄ " x H 3"
Power supply	208-230 V ~ 50/60 Hz - 14 W (SI10UL02UN23)	Safety standards	UL / CSA certified by Intertek
Insulation class	Double insulation <input type="checkbox"/>	RoHS & WEEE directives	Compliant
Detection levels	On: ²³ / ₃₂ " / Off: ¹ / ₂ " / Safety: ¹³ / ₁₆ "	Packaging	0.9 lbs - L 6 ⁷ / ₄ " x W 6 ⁵ / ₁₆ " x H 3 ³ / ₄ "
		Masterpack	12 pieces



Actual flow rates (GPH)



Sound level



Recommended accessories



Clear PVC hose, 1/4" i.d.

- ACC00909: 16ft roll
- ACC00919: 164ft roll



Self-sealing fitting to connect discharge tube to drain pipe.

- ACC00919, 5 pcs, for 1/4" i.d.



90° rubber elbow & "S" type hose, for connecting to the detection unit inlet.

- ACC00932
- ACC00933

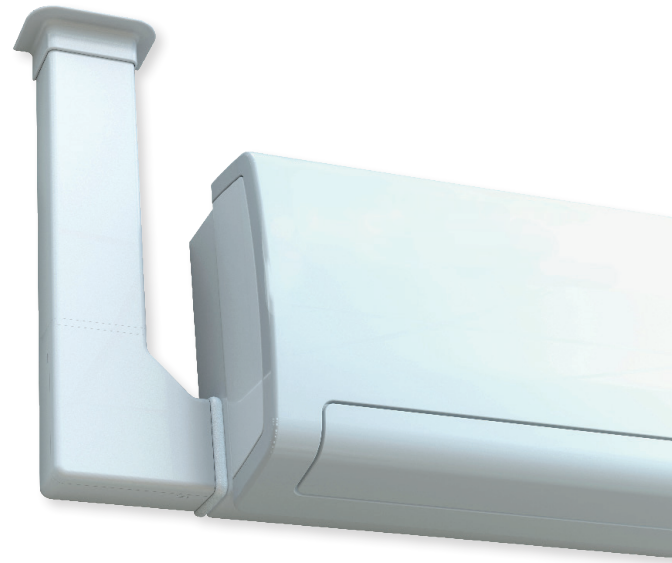
What's in the box

- Si-10 piston pump with integrated float detection unit
- 5' power cable: 2 power wires, 2 safety contact wires
- Anti-vibration mounting bracket
- Rubber elbow
- Vent tube

Delta Pack

Ready to install

The performance of our Si-10 with ducting for install next-to the air conditioning unit.



Suitable for

- Up to 5.5 tons
- Wall mounted units

Performance

- 5 gph max. flow
- 33' max. discharge



Drain safe device



Easy installation



Reversible mounting

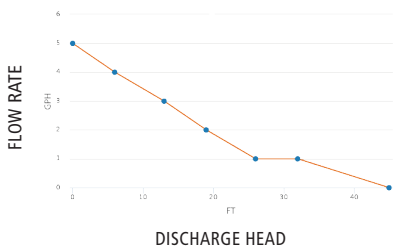
Delta Pack tech specs

Max. Flow rate	5.0 gph
Max. Discharge head	33ft: flow rate = 1 gph
Max. Pressure	46ft: flow rate = 0 gph
Sound level at 3.3ft	22 dBA according to EN ISO 3744 (measured at LNE lab, pump operating with water, out of application)
Power supply	208-230 V ~ 50/60 Hz - 14 W (DP10UL02UN23)
Insulation class	Double insulation <input type="checkbox"/>
Detection levels	On: $^{23}/_{32}$ " / Off: $^{1}/_{2}$ " / Safety: $^{13}/_{16}$ "

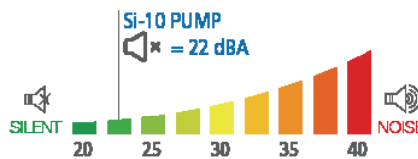
Safety switch	NC 8A resistive - 250 V
Thermal protection	239°F auto-reset
Operating conditions	100%: Continuous duty
Cover dimensions	L 5 $^{1}/_{8}$ " x W 5 $^{1}/_{8}$ " x H 2 $^{3}/_{8}$ "
Duct dimensions	L 30" x W 3" x H 2 $^{3}/_{8}$ "
Safety standards	UL / CSA certified by Intertek
RoHS & WEEE directives	Compliant
Packaging	3.4 lbs - L 30" x W 8 $^{7}/_{8}$ " x H 2 $^{3}/_{8}$ "
Masterpack	10 pieces



Actual flow rates (GPH)



Sound level



Recommended accessories



- Clear PVC hose, 1/4" i.d.**
- ACC00909: 16ft roll
 - ACC00910: 164ft roll



- Self-sealing fitting to connect discharge tube to drain pipe.**
- ACC00919, 5 pcs, for 1/4" i.d.



- Anti-siphon fitting**
- ACC00922, 5 pcs, for 1/4" i.d.

What's in the box

- Si-10 piston pump with clear pvc tube fitted with a premounted drain safe device
- 5' power cable: 2 power wires, 2 safety contact wires
- Vent tube
- 2-part elbow (base and cover)
- 30" of ductline
- Elbow / Fuct gasket
- Rubber elbow / split gasket
- Ceiling duct cover
- 20" flexible hose (for connection to the split)
- 6 screws and plugs, & 2 pipe clamps

Si-20

Mini pump

Slim design for a quick install inside the air conditioning unit.



Suitable for

- Up to 5 tons
- Wall mounted units
- Ducted units
- Suspended ceiling units
- Floor mounted units

Performance

- 5 gph max. flow
- 33' max. discharge



Slim design



Easy to install



Silent



Drain safe device

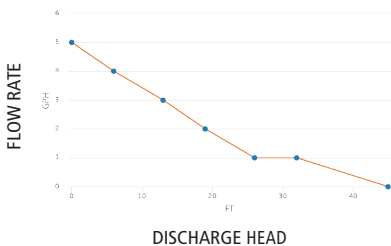
Si-20 tech specs

Max. Flow rate	5.0 gph
Max. Suction head	10ft
Max. Discharge head	33ft: flow rate = 1 gph
Max. Pressure	46ft: flow rate = 0 gph
Sound level	19 dBA
Power supply	120 v ~ 60 Hz - 13 W (SI20UL02UN12) 230 v ~ 50/60 Hz - 15 W (SI20UL02UN23)
Insulation class	Double insulation <input type="checkbox"/>
Detection levels	On: 5/8" / Off: 7/16" / Safety: 3/4"

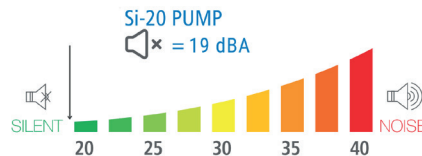
Safety switch	NC 6A resistive - 250 V
Thermal protection	239°F auto-reset
Operating cycle	100% Continuous duty
Pump dimensions	L 7 1/16" x W 1 1/16" x H 1 1/16"
Safety standards	UL / CSA certified by Intertek
RoHS & WEEE directives	Compliant
Packaging	1lb - L 7 1/64" x W 7 1/64" x H 2 53/64"
Masterpack	6 pieces



Actual flow rates (GPH)



Sound level



Recommended accessories



- Clear PVC hose, 1/4" i.d.**
- ACC00909: 16ft roll
 - ACC00910: 164ft roll



- Self-sealing fitting to connect discharge tube to drain pipe.**
- ACC00919, 5 pcs, for 1/4" i.d.

What's in the box

- Piston pump with connectors: power cable, 7 7/8" pump cable
- 1 detection unit with connector power cable
- Clear PVC tube int. Ø 1/4" - L 39 3/8", fitted with pre-mounted "Drain Safe Device" connector
- 1 Split Connector, 1/2" - 10/16"
- Detection unit installation kit:
 - Rubber elbow
 - Vent tube
 - Mounting rail
 - Adhesive
 - 3 double wire clamps
 - 3 tie wraps
- 1 mounting plate, 1 rubber damper

Si-21 - Silent Flow

Mini pump

Slim design for a quick install inside the air conditioning unit.



Suitable for

- Up to 5 tons
- Wall mounted units
- Ducted units
- Suspended ceiling units
- Floor mounted units
- Performance
- 5 gph max.
- 49' max. discharge



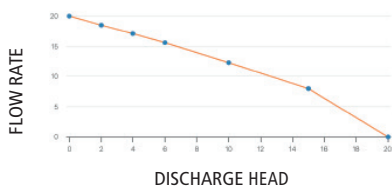
Si-20 tech specs

Max. Flow rate	5 gph
Max. Suction head	10ft
Max. Discharge head	49 ft - flow rate = 1 gph
Max. Pressure	65 ft - flow rate = 0 gph
Sound level	< or =17 dBA*
Power supply	Univolt 100-240 V - 50/60 Hz - 3 W
Insulation class	Double insulation
Detection levels	On: .63, Off: .43, Safety: .75 inches

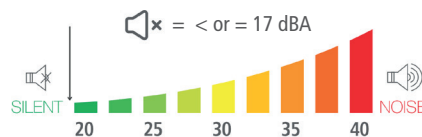
Safety switch	NC 3A resistive - 250 V
Thermal protection	IP42
Operating cycle	100% Continuous duty
Pump dimensions	L 6.7 x W 1 x H 1.4 inches
Safety standards	CE, EAC, UKCA, UL
RoHS & WEEE directives	Compliant
Packaging	L 7 x W 7 x H 2.8 inches
Masterpack	6 pieces

* Sound level applicable with a 2kW AC and a discharge heard of 1 m.

Actual flow rates (GPH)



Sound level



Recommended accessories



- Clear PVC hose, 1/4" i.d.
- ACC00909: 16ft roll
 - ACC00910: 164ft roll



- Self-sealing fitting to connect discharge tube to drain pipe.
- ACC00919, 5 pcs, for 1/4" i.d.

What's in the box

- Diaphragm pump with connectors
- 1.5 m power cable
- Detection unit with filter, 1.5 m power cable
- Transparent PVC pipe Ø int. 6 mm - L 1m, equipped with a Drain Safe Device connector
- Hook and loop fastener 125 x 25 mm
- 3 double wire clamps
- 3 tie wraps, 2.5 x 200 mm
- Detection unit installation kit:
 - 90 ° connection Ø int. 15 mm x W 152 mm
 - vent tube Ø int. 4 mm x 75 mm
 - fixing railing adhesive

Si-30

Mini condensate removal pump

Compact design for install remotely above the air conditioning unit.



Suitable for

- Up to 5 tons
- Wall mounted units
- Ducted units
- Suspended ceiling units
- Floor mounted units

Performance

- 5 gph max. flow
- 33' max. discharge



Mounting bracket



Locking power cord



Drain safe device



Versatile installations options

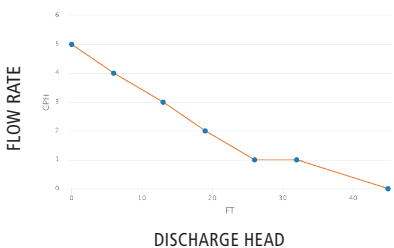
Si-30 tech specs

Max. Flow rate	5.0 gph
Max. Suction head	10ft
Max. Discharge head	33ft: flow rate = 1 gph
Max. Pressure	46ft: flow rate = 0 gph
Sound level at 3.3ft	20 dBA according to EN ISO 3744 (measured at LNE lab, pump operating with water, out of application)
Power supply	120 V ~ 60 Hz - 14 W (SI30UL01UN12) 230 V ~ 50/60 Hz - 14 W (SI30UL01UN23)
Insulation class	Double insulation <input type="checkbox"/>
Detection levels	On: $\frac{5}{8}$ " / Off: $\frac{7}{16}$ " / Safety: $\frac{3}{4}$ "

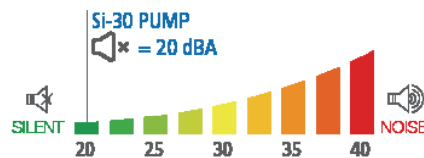
Safety switch	NC 8A resistive - 250 V
Thermal protection	240°F auto-reset
Operating conditions	70%: 3s ON – 5s OFF
Pump dimensions	L 2 $\frac{5}{8}$ " x W 1 $\frac{3}{4}$ " x H 2 $\frac{1}{8}$ "
Safety standards	UL / CSA certified by Intertek
RoHS & WEEE directives	Compliant
Packaging	1.1 lbs - L 5 $\frac{5}{16}$ " x W 5 $\frac{5}{16}$ " x H 3 $\frac{17}{32}$ "
Masterpack	20 pieces



Actual flow rates (GPH)



Sound level



Recommended accessories



- Clear PVC hose, 1/4" i.d.**
- ACC00909: 16ft roll
 - ACC00910: 164ft roll



- Self-sealing fitting to connect discharge tube to drain pipe.**
- ACC00919, 5 pcs, for 1/4" i.d.

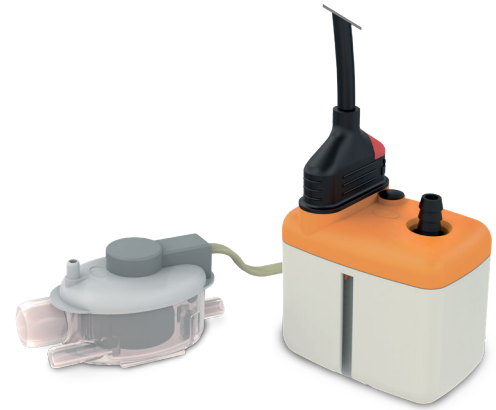
What's in the box

- Si-30 piston pump with clear pvc tube fitted with a pre-mounted drain safe device
- 5' power cable: 2 power wires, 2 safety contact wires
- Anti-vibration rubber damper
- Detection unit – Si2958, 2' cable
- Detection unit installation kit:
 - Rubber elbow
 - Vent tube
 - Mounting rail
 - Adhesive
 - 6 tie wraps

Si-33

Mini condensate removal pump

Compact design & higher performing power for install remotely above the air conditioning unit.



Suitable for

- Up to 8.5 tons
- Wall mounted units
- Ducted units
- Suspended ceiling units
- Floor mounted units

Performance

- 8 gph max. flow
- 43' max. discharge



High performing



Locking power cord



Drain safe device



Versatile installations options

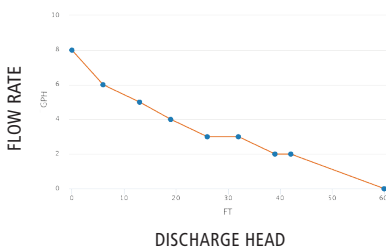
Si-33 tech specs

Max. Flow rate	8.0 gph
Max. Suction head	13ft
Max. Discharge head	43ft: flow rate = 2 gph
Max. Pressure	60ft: flow rate = 0 gph
Sound level at 3.3ft	34 dBA according to EN ISO 3744 (measured at LNE lab, pump operating with water, out of application)
Power supply	120 V ~ 60 Hz - 21 W (SI33UL01US12) 230 V ~ 50/60 Hz - 21 W (SI33UL01US23)
Insulation class	Double insulation <input type="checkbox"/>
Detection levels	On: $\frac{5}{8}$ " / Off: $\frac{7}{16}$ " / Safety: $\frac{3}{4}$ "

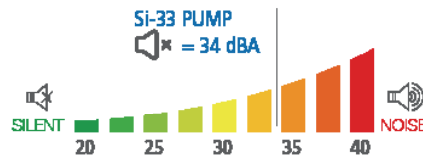
Safety switch	NC 8A resistive - 250 V
Thermal protection	240°F auto-reset
Operating conditions	40%: 3s ON – 5s OFF
Pump dimensions	L 2 $\frac{5}{8}$ " x W 1 $\frac{3}{4}$ " x H 2 $\frac{1}{8}$ "
Safety standards	UL / CSA certified by Intertek
RoHS & WEEE directives	Compliant
Packaging	1.1 lbs - L 5 $\frac{5}{16}$ " x W 5 $\frac{5}{16}$ " x H 3 $\frac{17}{32}$ "
Masterpack	20 pieces



Actual flow rates (GPH)



Sound level



Recommended accessories



- Clear PVC hose, 1/4" i.d.**
- ACC00909: 16ft roll
 - ACC00910: 164ft roll



- Self-sealing fitting to connect discharge tube to drain pipe.**
- ACC00919, 5 pcs, for 1/4" i.d.

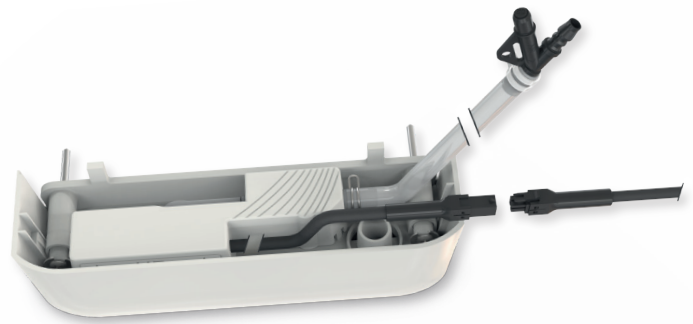
What's in the box

- Si-33 piston pump with clear pvc tube fitted with a pre-mounted drain safe device
- 5' power cable: 2 power wires, 2 safety contact wires
- Anti-vibration mounting bracket
- Detection unit – Si2958, 2' cable
- Detection unit installation kit:
 - Rubber elbow
 - Vent tube
 - Mounting rail
 - Adhesive
 - 6 tie wraps

Omega Pack 2

Mini condensate removal pump

Ready to fit kit for mini-splits.



Suitable for

- Up to 5 tons
- Wall mounted units

Performance

- 5 gph max. flow
- 32' max. discharge



Modern design



Reversible mounting



Easy to install



Drain safe device

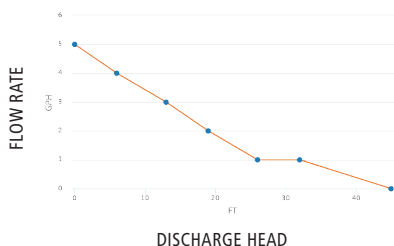
Omega Pack tech specs

Max. Flow rate	5.0 gph
Max. Discharge head	32ft: flow rate = 1 gph
Max. Pressure	45ft: flow rate = 0 gph
Sound level at 3.3ft	22 dBA according to EN ISO 3744 (measured at LNE lab, pump operating with water, out of application)
Power supply	120 v ~ 60 Hz - 13 W (OP20UL02UN12) 230 v ~ 50/60 Hz - 15 W (OP20UL02UN23)
Insulation class	Double insulation <input type="checkbox"/>
Detection levels	On: 1 ⁵ / ₁₆ " / Off: 2 ⁵ / ₃₂ " / Safety: 1 ¹ / ₁₆ "

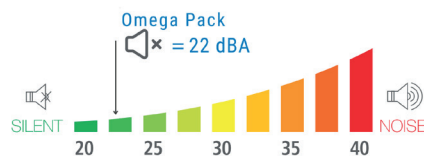
Safety switch	NF 5A resistive - 250 V
Thermal protection	239°F auto-reset
Operating cycle	100% Continuous duty
Color	RAL 9003 – Pure white
Cover dimensions	L 8 ¹ / ₆₄ " x W 2 ¹³ / ₃₂ " x H 2 ³⁷ / ₆₄ "
Safety standards	UL / CSA certified by Intertek
RoHS & WEEE directives	Compliant
Packaging	1.48 lbs - L 9 ⁵⁹ / ₆₄ " x W 5 ³³ / ₆₄ " x H 3 ²¹ / ₃₂ "
Masterpack	6 pieces



Actual flow rates (GPH)



Sound level



Recommended accessories



Clear PVC hose, 1/4" i.d.

- ACC00909: 16ft roll
- ACC00910: 164ft roll



Self-sealing fitting to connect discharge tube to drain pipe.

- ACC00919, 5 pcs, for 1/4" i.d.

What's in the box

- 1 Omega Pack 2 with integrated piston pump, detection unit and 7.9" connector
- 1 Soft transparent PVC tube int. Ø 1/4", 39.4" length, factory fitted with pre-mounted "Drain Safe Device"
- 1 Soft transparent PVC tube int. Ø 1/4" (6 mm), 39.4" (1 m) length, factory fitted with pre-mounted "Drain Safe Device"
- 1 power & alarm cable, 4' connector
- 1 soft PVC tube, 9 27/32", int. Ø 19/32"
- 2 screws + 2 plugs + 2 washers
- 3 tie wraps
- Split connector, Ø 35/64" - Ø 43/64"

Si-61

Piston pump

Designed to remove acidic condensates from gas condensing boilers/tankless water heaters.



Suitable for

- Up to 5 tons
- Wall mounted units
- Ducted units
- Suspended ceiling units
- Floor mounted units

Performance

- 5 gph max. flow
- 26' max. pressure



Patented technology



Easy to install



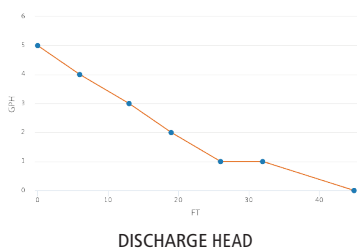
Drain safe device

tech specs

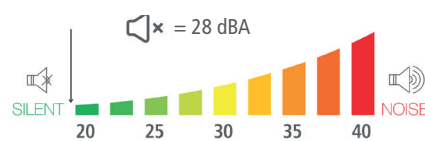
Max. Flow rate	2.64 gal/h (10l/h)	Safety switch	NC 3A resistive - 250 V
Max. Pressure (flow rate 0)	26' (8m)	Thermal protection	Yes, 194°F (90 C) auto-reset
	13' (4m)	Operating cycle	100% Continuous duty
Max. Discharge head	Flow rate: 1.19 gal/h (4.5 l/h) <170 607 BTU/h (50 kw)	Pump dimensions	3 9/16" x 6 5/8"
Max. Pressure	26 feet (8m)	Safety standards	CE & EAC
Sound level	28 dBA	RoHS & WEEE directives	Compliant
Power supply	230V-50/60 Hz-10W	Packaging	2.3lbs - L 11 ¹⁷ / ₃₂ " x W 5 ²³ / ₆₄ " x H 7 ¹³ / ₆₄ "
Insulation class	Double insulation <input type="checkbox"/>	Masterpack	5 pieces



Actual flow rates (GPH)



Sound level



Recommended accessories



Clear PVC hose, 1/4" i.d.

- ACC00909: 16ft roll
- ACC00910: 164ft roll



Self-sealing fitting to connect discharge tube to drain pipe.

- ACC00919, 5 pcs, for 1/4" i.d.

What's in the box

- One-piece piston pump with 0.1(0.37l) gal tank
- Intergrated float detection unit
- 5' (1.5m) power plug-i power cable, 2 power wires, 2 safety contact wires
- Inlet rubber adapter int. 0 5/8"-3/4"-1 1"1/4-1"1/2 (int. 0 15-20-24-32-40mm)
- 16' (5m) of tubing 9int. 0 1/4"-6mm
- Drain safe device
- Self-Sealing discharge fitting
- Double wire spring clips (x4)
- 2 screws, 2 plugs

Si-83

Centrifugal tank pump

Suitable for

- Gas-condensing boilers
- High-efficiency gas furnaces
- Refrigeration cabinets
- Floor standing air conditioning units
- Multi split cassette units
- Ducted units
- Evaporators

Performance

- 145 gph max. flow
- 22' shut off head
- 1/2 gallon tank capacity



Built-in safety switch



Exceptional Durability



Quick and easy maintenance

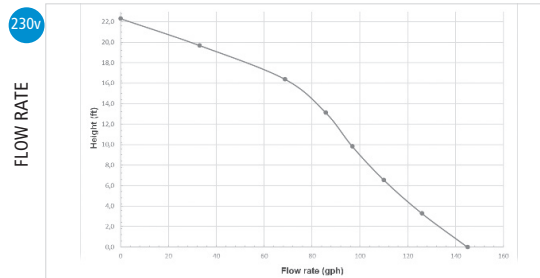
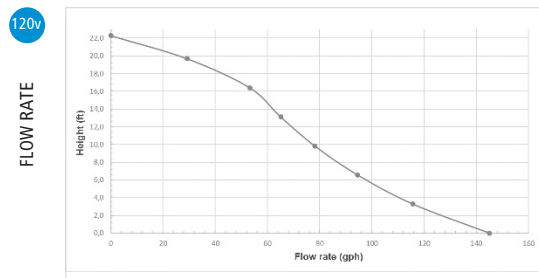
Si-83 tech specs

Max. Flow rate	145 gph
Max. Discharge head	21': flow rate = 15 gph
Shut-off head	22'
Tank Capacity	1/2 gallon
Power supply	SI83UL02UN12: 120V~ 60 Hz - 84W - 1.7 A SI83UL02UN23: 230V~ 60 Hz - 126W - 1.55 A SI83UL03UN12: 120V~ 60 Hz - 84W - 1.7 A SI83UL03UN23: 230V~ 60 Hz - 126W - 1.55 A
Max. condensate temp.	131°F / short peak 176°F - 10 min
Max. condensate acidity	pH > 2.5 (Gas condensing boilers)

Safety switch	NC 5 A - 42 V peak
Thermal protection	248°F auto-reset
Operating conditions	7%: Non-continuous duty
Safety standards	UL / CSA certified by Intertek
Pump dimensions	L 11" 5/16" x W 5" 3/4" x H 5" 15/16"
Packaging	SI83UL02UN12/23: 4.0 lb, L 12" 3/8" x W 5" 15/16" x H 6" 7/8" SI83UL03UN12/23: 5.3 lb, L 12" 3/8" x W 5" 15/16" x H 8" 15/16"
Masterpack	SI83UL02UN12/23: 5 pieces SI83UL03UN12/23: 4 pieces



Actual flow rates (GPH)



Recommended Accessory pH Safe 1



What's in the box

- Centrifugal tank pump with integrated barb end check valve
- 6' power cable, safety contact wires, 1' bare ends
- 20' of tubing (only included with models: SI83UL03UN12 & SI83UL03UN23)
- Adaptor int. Ø 5/8" - 3/4" - 1" - 1 1/2" - 1 1/2"
- 2 screws, & 2 wall anchors

Si-1801

Centrifugal tank pump



Suitable for

- Gas-condensing boilers
- High-efficiency gas furnaces
- Refrigeration cabinets
- Floor standing air conditioning units
- Multi split cassette units
- Ducted units
- Evaporators

Performance

- 132 gph max. flow
- 17' shut off head (SI1801LHUS11)
- 23' shut off head (SI1801SCUS11/23)
- 23' shut off head (SI1801SCUS11T/23T)



Built-in safety switch



Oil and acid resistant float



Installation versatility

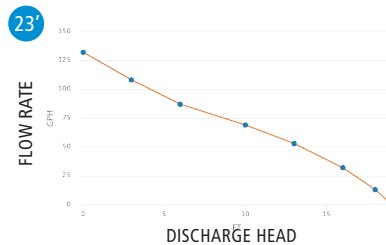
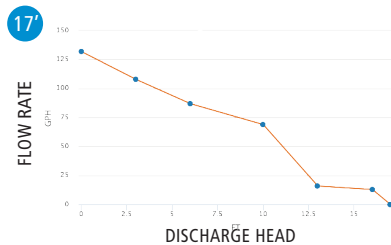
Si-1801 tech specs

Max. Flow rate	132 gph
Max. Discharge head	17': SI1801LHUS11 23': SI1801SCUS11/23 23': SI1801SCUS11T/23T
Tank Capacity	1/2 gallon
Power supply	SI1801LHUS11: 120V~60Hz-85W-1.45A SI1801SCUS11: 120V~60Hz-85W-1.45A SI1801SCUS23: 230V~50/60Hz-80W-0.72A SI1801US11/T: 120V~60Hz-85W-1.45A SI1801US23/T: 230V~50/60Hz-80W-0.72A
Max. condensate temp.	150°F / short peak 176°F - 1 min
Max. condensate acidity	pH > 2.5 (Gas condensing boilers)

Safety switch	NC 4 A resistive - 42 V peak
Thermal protection	230°F auto-reset
Operating conditions	30%: 3 sec ON - 7 sec OFF
Safety standards	UL / CSA certified by Intertek
Pump dimensions	L 11" x W 5" ³ / ₁₆ x H 6" ⁵ / ₇
Packaging	SI1801LHUS11 & SI1801SCUS11/23: 4.4 lb & 5.5 lbs, L 11" ⁵ / ₈ x W 5" ⁵ / ₁₆ x H 7" ¹ / ₄ SI1801US11T/23T: 6.2 lbs, L 11" ⁵ / ₈ x W 5" ⁵ / ₁₆ x H 9" ⁷ / ₈
Masterpack	SI1801LHUS11 & SI1801SCUS11/23: 5 pieces SI1801US11T/23T: 4 pieces



Actual flow rates (GPH)



Recommended Accessory pH Safe 1



What's in the box

- Centrifugal tank pump with integrated barb end check valve
- 6' power cable, safety contact wires, 1' bare ends
- 20' of tubing (only included with models ending in "/T")
- Adaptor
- 2 screws, & 2 wall anchors



SI-1801TNUS11/23

Centrifugal tank pump w pH Safe 1 Neutralizer

Suitable for

- Gas-condensing boilers
- High-efficiency gas furnaces

Performance

- 132 gph max. flow
- 23' shut off head



Available in 230V - SI-1801TNUS23



Built-in safety switch



Oil and acid resistant float



Installation versatility

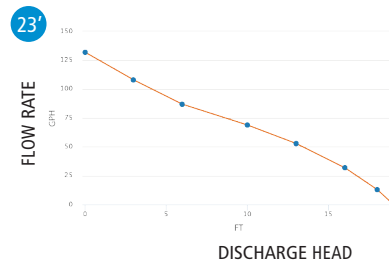
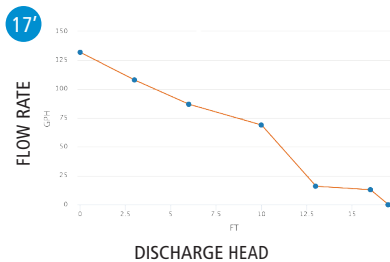
tech specs

Max. Neutralization	132 gph
Max. Discharge head	23'
Tank Capacity	1/2 gallon
Power supply	SI1801TNUS11: 120V-60Hz-85W-1.45A SI1801TNUS23: 230V-50/60Hz-80W-0.72A
Max. condensate temp.	150°F / short peak 176°F - 1 min
Max. condensate acidity	pH > 2.5 (Gas condensing boilers)

Safety switch	NC 4 A resistive - 42 V peak
Thermal protection	230°F auto-reset
Operating conditions	30%: 3 sec ON - 7 sec OFF
Safety standards	UL / CSA certified by Intertek
Pump dimensions	L 11" x W 5" 3/16" x H 6" 5/7"
Packaging	6.2 lbs, L 11" 5/8" x W 5" 5/16" x H 9" 7/8"
Masterpack	SI1801TNUS11/23: 4 pieces



Actual flow rates (GPH)



What's in the box

- Centrifugal tank pump with integrated barb end check valve
- pH Safe 1 Filter
- 6' power cable, safety contact wires, 1' bare ends
- 20' of tubing (only included with models ending in "T")
- Adaptor
- 2 screws, & 2 wall anchors

Pump Accessories

Tubing



Clear PVC Tubing
ACC00909 / ACC00910
Connects the pump to the discharge outlet
I.D.: 1/4"
PKG QTY: 16' / 164' roll



Clear PVC Tubing
ACC00120 / ACC00911
Connects the pump to the discharge outlet
I.D.: 3/8"
PKG QTY: 20' / 82' roll



Braided Tubing
ACC00914 / ACC00915
Connects the pump to the discharge outlet
I.D.: 1/4", 3/8"
PKG QTY: 164' / 82' roll



Opaque Rubber Tube
ACC00931
Connects the condensate tank outlet to the detection unit
I.D.: 3/8"
PKG QTY: 20"

Fittings, connectors and elbows



Drain Safe Device
ACC00922 / ACC00923
Anti-siphoning fitting
Diameter: 1/4", 3/8"
PKG QTY: 5



Self Sealing Fitting
ACC00919 / ACC00920
Self sealing fitting for connection to the discharge tubing
Diameter: 1/4", 3/8"
PKG QTY: 5



Straight Connector
ACC00900 / ACC00901
For connecting 2 pieces of tubing
Diameter: 1/4", 3/8"
PKG QTY: 5



"T" Connector
ACC00902 / ACC00903
For connecting three pieces of tubing
Diameter: 1/4", 3/8"
PKG QTY: 5



Elbow Connector
ACC00904 / ACC00905
For connecting 2 pieces of tubing
Diameter: 1/4", 3/8"
PKG QTY: 5



"5" Type Hose
ACC00933
Lowers the detection unit position & reduces the water level for the total drain pan
Diameter: 19/32" x 19/32"
PKG QTY: 3



90° Elbow
ACC00932
For connection to the detection unit inlet
Diameter: 19/32" x 19/32"
PKG QTY: 3



Double wire clamps
ACC00912 / ACC00913
Connects the detection unit inlet to the condensate tank
Diameter: 1/4", 3/8"
PKG QTY: 25

Adaptors



Inlet Adaptor
ACC00936 / 937 / 938
Connects two different diameter pipes together
Diameter: 1", 1 1/4", 1 1/2"
PKG QTY: 3



Straight Adaptor
ACC00929
Reduces the drain hose length to facilitate the detection unit
Diameter: 39/64" to 5/8"
or 9/16" to 5/8"
PKG QTY: 3



Reducing Adaptor
ACC00926
Reduces the diameter between the condensate tank & the detection unit
Diameter: 1 1/4"-1 1/16mm
PKG QTY: 3

Check valves



Check Valve (tank pumps)
ACC00925
Replacement check valve
Diameter: 3/8"
PKG QTY: 3



Check Valve (mini pumps)
ACC00924
Replacement check valves
Diameter: 1/4"
PKG QTY: 5



Extension cord
ACC00942
To increase the length between the pump & the detection unit
Length: 9.8'
PKG QTY: 1



Extension cord
ACC00943
To increase the length between the pump & the detection unit
Length: 16.4'
PKG QTY: 1

Misc.



Detection unit
Si2958
Replacement detection unit
Diameter: 19/32" x 1/4"
PKG QTY: 1



pH Safe 1 Neutralization Cartridge
PH0100SIUN23
Neutralizes acidic condensates produced by condensing boilers and furnaces.
PKG QTY: 1

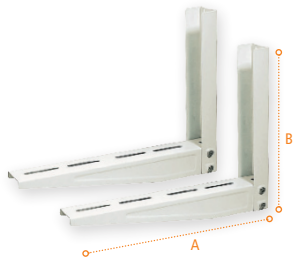


pH Safe 2 Neutralization Cartridge
PH02UL01UN00
Neutralizes acidic condensates produced by condensing boilers and furnaces.
PKG QTY: 1



Testing Bottle
ACC00944
Bottle to test pump
PKG QTY: 1

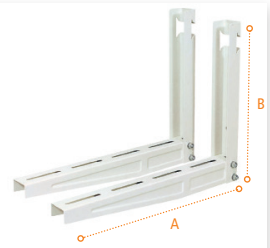
Brackets



Heavy duty wall bracket

Supplied with screws only.
CAPACITY: 440 lbs / 200 kg

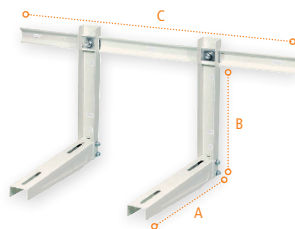
Model	Material	Dimension (mm) (AxB)	Dimension (inch) (AxB)	Pallet/Ctn (pcs)
B5520	Gal. Steel	520x400	19 1/16" x 15 3/4"	112



Wall bracket without bar

Supplied with screws, washers, and anchors.
CAPACITY: 300 lbs / 140 kg

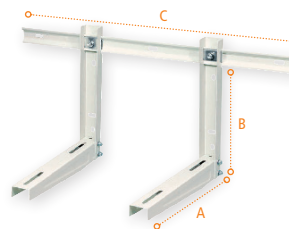
Model	Material	Dimension (mm) (AxB)	Dimension (inch) (AxB)	Pallet/Ctn (pcs)
B5600	Gal. Steel	600x400	23 3/8" x 15 3/4"	117



Heavy duty adjustable wall bracket with bar

Supplied with screws, washers, and anchors.
CAPACITY: 660 lbs / 300 kg

Model	Material	Dimension (mm) (AxBxC)	Dimension (inch) (AxBxC)	Pallet/Ctn (pcs)
B5520HDFKDB	Gal. Steel	520x400x960	19 1/16" x 15 3/4" x 37 7/8"	117



Adjustable wall bracket with bar

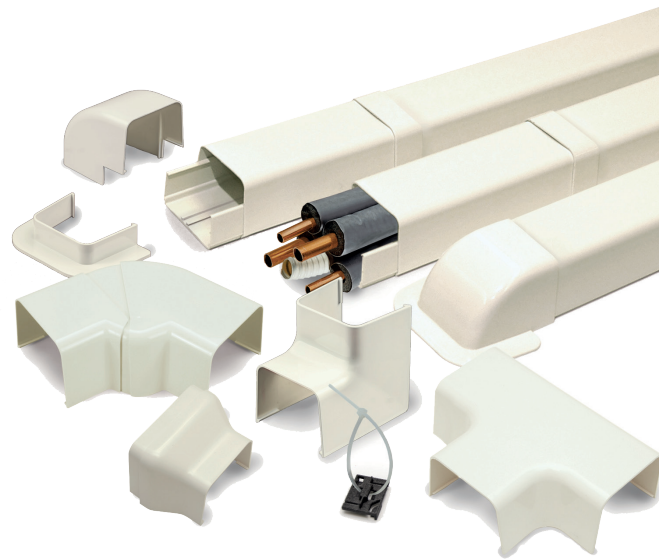
Supply with screws, washers, and anchors.
CAPACITY: 242 lbs / 110 kg

Model	Material	Dimension (mm) (AxBxC)	Dimension (inch) (AxBxC)	Pallet/Ctn (pcs)
BSB450	Gal. Steel	450x420x800	17 3/4" x 16 1/2" x 31 1/2"	117

Easy Lineset Duct

For mini splits and conventional split systems

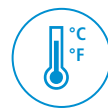
Use our duct cover range to protect linesets against deterioration due to climatic conditions.



Impact resistant



UV resistant



Wide temperature range



Snap together
Quick and easy



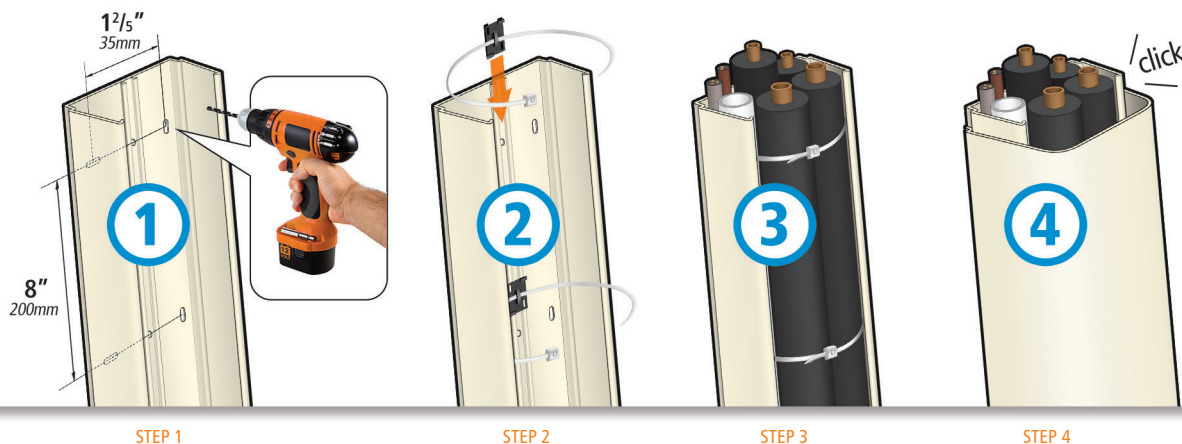
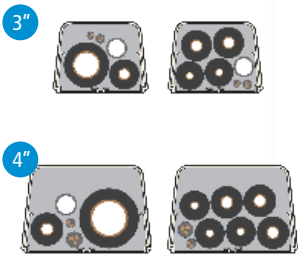
Removable protective
film (ducts only)



Less time & labor costs

- One person can quickly and easily install
- Unique clips & tie wraps keep tubing in place during installation

Easy install



STEP 1

STEP 2

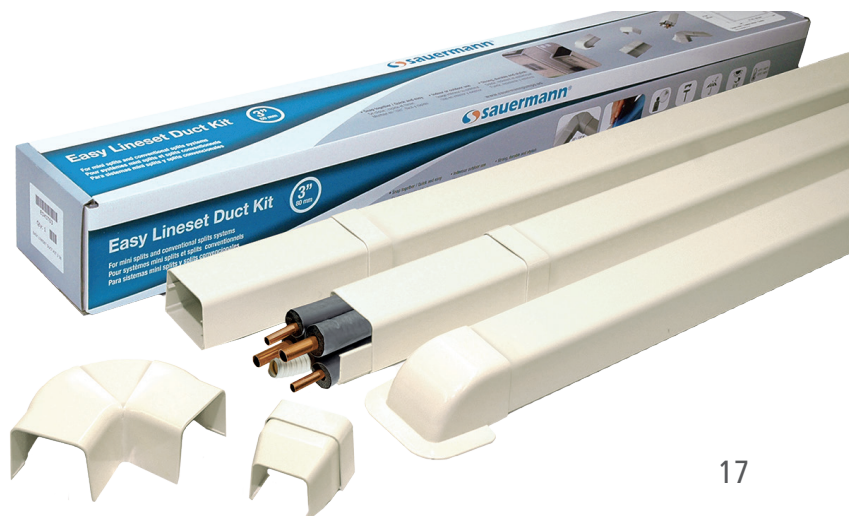
STEP 3

STEP 4

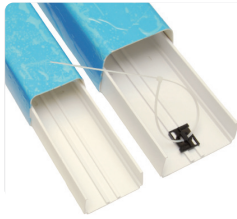
Easy lineset duct kit

Everything you need for a typical job in one convenient kit!

- Available in 3" and 4" sizes
- Sauermann part #s
- ED3000SIUS00 3" Duct Kit
- ED4000SIUS00 4" Duct Kit



Duct Pieces



Duct line

To contain and conceal pipes, and cables. Compact duct with protection film, includes 3 lineset clips and tie wraps per length of duct. Each piece is 6'6" (2m).

Model	Qty
DUE80	8 pcs.
DUE110	8 pcs.



Flat bend 90°

To connect at right angle one horizontal and one vertical duct.

Model	Qty
FBE80	10 pcs.
FBE110	10 pcs.



Lineset clip

Slides on the railing in the duct. Secures the pipework inside the ducting. Each clip comes with an 11" (280mm) tie wrap.

Model	Qty
CLIP	24 pcs.



Adjustable bend

Hinges to create a 90°-130° angle.

Model	Qty
ABE80	10 pcs.
ABE110	10 pcs.



Coupling sleeve

Snaps on to connect two duct pieces together.

Model	Qty
CSE80	10 pcs.
CSE110	10 pcs.



End duct terminal

To finish the duct in the wall insertion.

Model	Qty
EDTE80	10 pcs.
EDTE110	10 pcs.



Tee joint

Extremely useful for branching of pipes and cables on multiple split installations. Can be used with a joint reduction.

Model	Qty
TJE80	10 pcs.
TJE110	10 pcs.



Wall terminal

To cover wall holes and end part of the duct. Fits easily on the end of the duct pieces.

Model	Qty
WTE80	10 pcs.
WTE110	10 pcs.



Corner bend

To connect two duct pieces at a right, internal angle.

Model	Qty
CBE80	10 pcs.
CBE110	10 pcs.



Wall duct

To cover the through wall holes.

Model	Qty
WDE80	10 pcs.
WDE110	10 pcs.



Flexible sleeve

Thanks to its flexibility, installations will become much easier when obstacles (such as eaves or beams) are in the way. Length: 20" (508mm)

Model	Qty
FLES80	10 pcs.
FLES110	10 pcs.



Elbow bend

To connect two duct pieces at a right, external angle.

Model	Qty
EBE80	10 pcs.
EBE110	10 pcs.



Joint reduction

To connect two ducts of different sizes. (3"-4" / 80-110mm).

Model	Qty
OTP110	10 pcs.

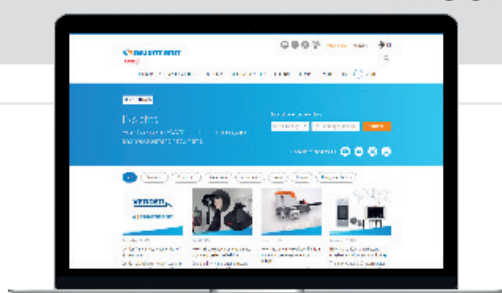


End fitting

Fits easily on the end of the duct pieces.

Model	Qty
EFI80	10 pcs.
EFI110	10 pcs.

Professional solutions for condensate management and indoor air quality measurement



INsights

Case studies, useful information and practical advice for HVACR and indoor air quality professionals.

sauermanngroup.com/insights

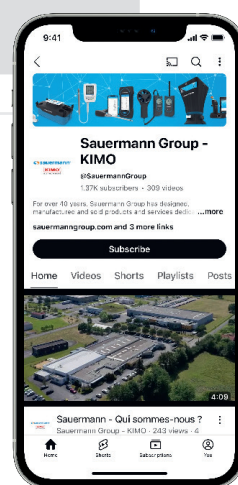


Scan me to view all our Sauermann and Kimo catalogs online

Sauermann on YouTube

Head to our YouTube channel for tutorials, webinars and product guides.

youtube.com/sauermanngroup



To learn more, please visit: sauermanngroup.com



 **sauerstoff**[®]
a **VERDER** company

Expertly Engineered. Quietly Powerful. Always Efficient.